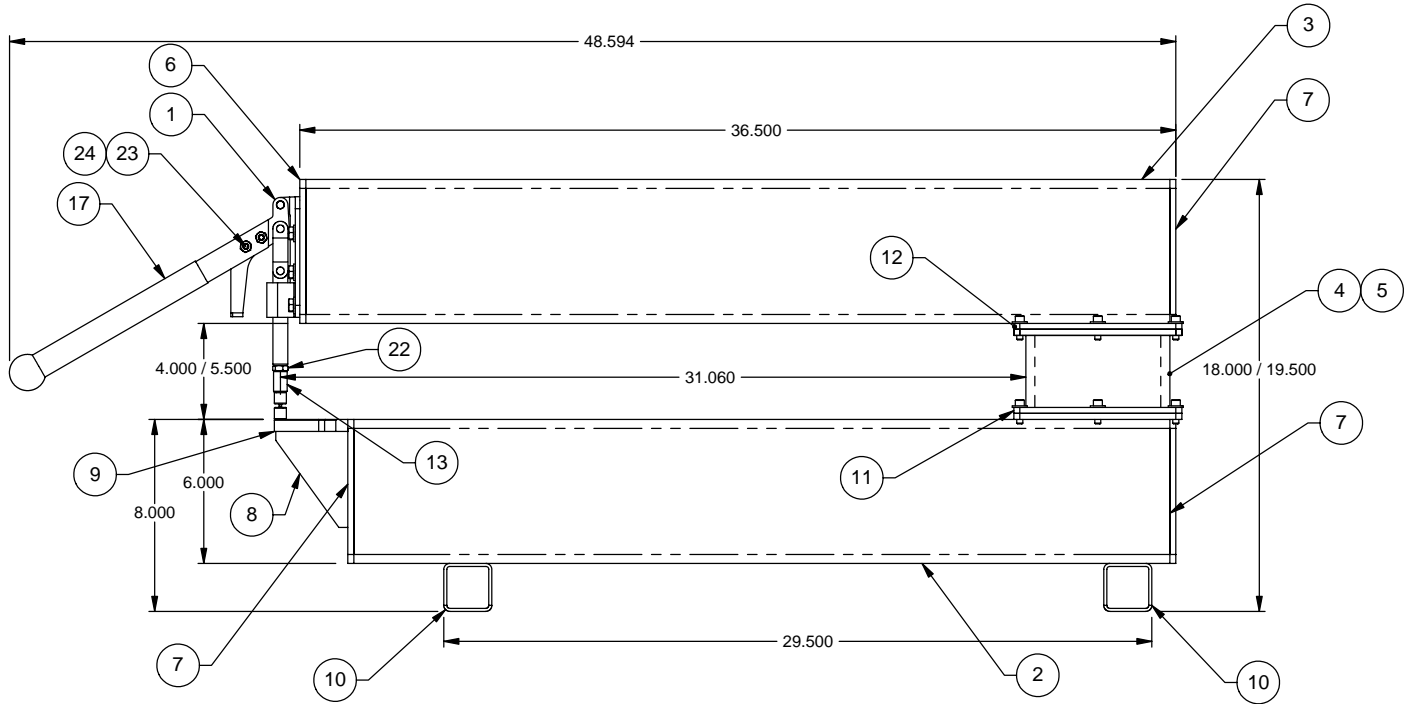
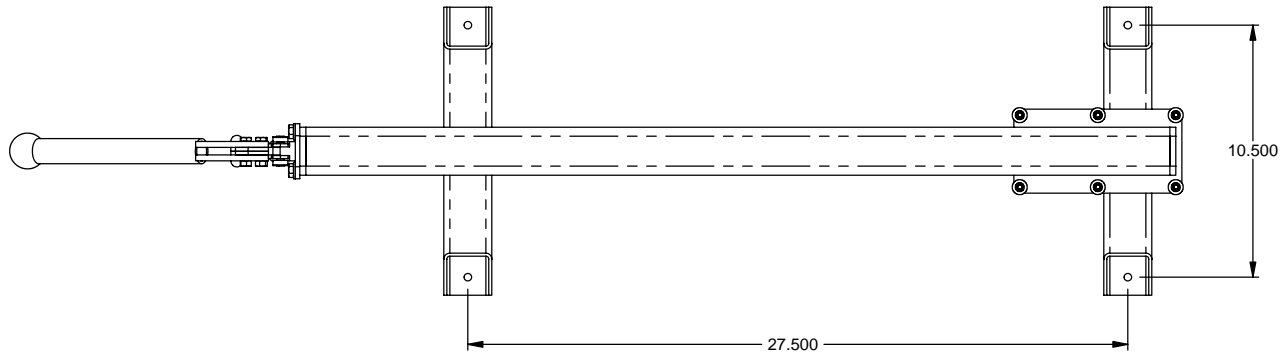
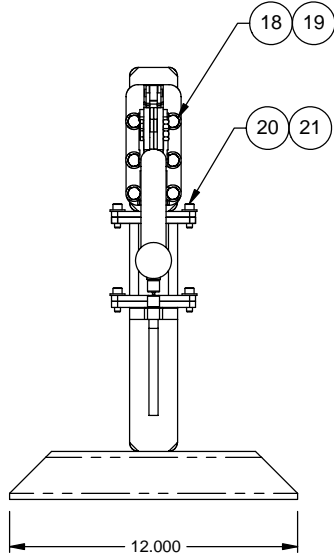
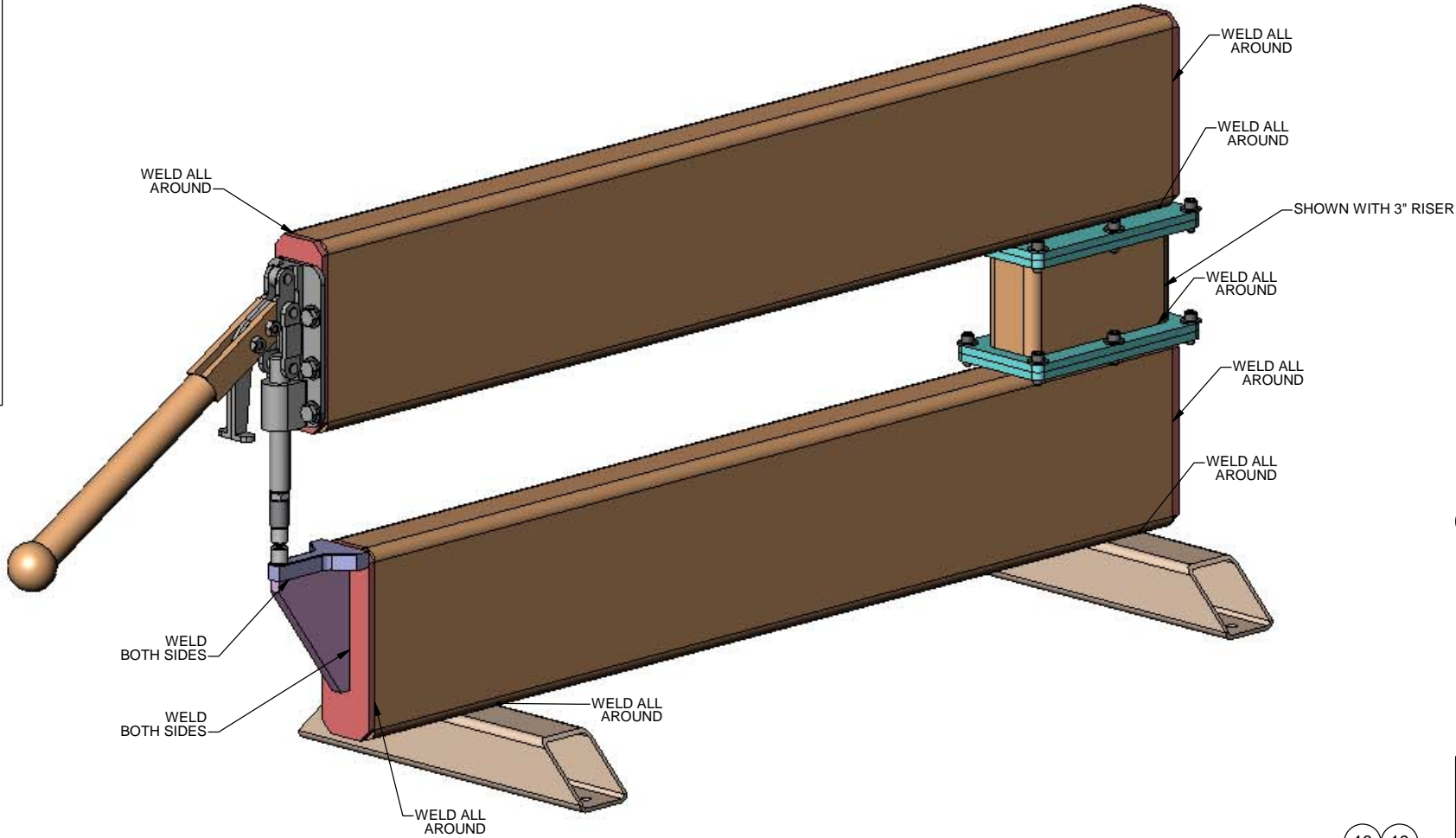


Copyright by Custom Design & Fabrication
This drawing contains information that is proprietary to Custom Design & Fabrication.
It may not in full or any portion of it be reproduced, copied or duplicated in any
manner without the written consent of Custom Design & Fabrication.



OVER VIEW

2	HEX NUT, 1/4 -20	GRADE 8 ALLOY STEEL		24
2	HEX BOLT, 1/4-20 X 1"	GRADE 8 ALLOY STEEL		23
1	HEX JAM NUT, 3/8"	ALLOY STEEL		22
12	FLAT WASHER, 1/4"	GRADE 8 ALLOY STEEL		21
12	SOCKET HEAD CAP SCREW, 1/4 X 3/4"	ALLOY STEEL		20
6	FLAT WASHER, 5/16"	GRADE 8 ALLOY STEEL		19
6	HEX BOLT, 5/16-18 X 1/2"			18
1	FABRICATED HANDLE	3/4" SCHD 40 STEEL PIPE		17
1	MALE DIMPLING DIE		AIRCRAFT TOOL SUPPLY	16
1	FEMALE DIMPLING DIE		AIRCRAFT TOOL SUPPLY	15
1	ROUND BAR, 9/16	4140 PRECISION GROUND		14
1	ROUND BAR, 9/16 DIA.	4140 PRECISION GROUND		13
3	FLAT BAR, 1/4 X 3.5	MILD STEEL, 1020		12
3	FLAT BAR, 1/4 X 3.5	MILD STEEL, 1020		11
2	SQUARE TUBE, 2 X 2 X .125	MILD STL, 1020		10
1	FLAT BAR, 1/2 X 2	MILD STL, 1020		9
1	FLAT BAR, 3/8 X 3	MILD STL, 1020		8
3	FLAT BAR, 1/4 X 2	MILD STL, 1020		7
1	FLAT BAR, 1/4 X 2	MILD STL, 1020		6
1	RECTANGULAR TUBE 2 X 6 X .25	MILD STL, 1020		5
1	RECTANGULAR TUBE 2 X 6 X .25	MILD STL, 1020		4
1	RECTANGULAR TUBE 2 X 6 X .25	MILD STL, 1020		3
1	RECTANGULAR TUBE 2 X 6 X .25	MILD STL, 1020		2
1	IN LINE TOGGLE CLAMP		DESTACO #630	1
QTY	DESCRIPTION	MATERIAL	REMARKS	ITEM NO.
PARTS LIST				

TOLERANCES: ANGULAR ±0.1 MAX. SURFACE 125 DECIMALS 0.X ±0.015 0.XX ±0.010 0.XXX ±0.003
BREAK EDGES 0.005" MAX. REMOVE ALL BURRS
INTERPRET TO ANSI Y14.5M

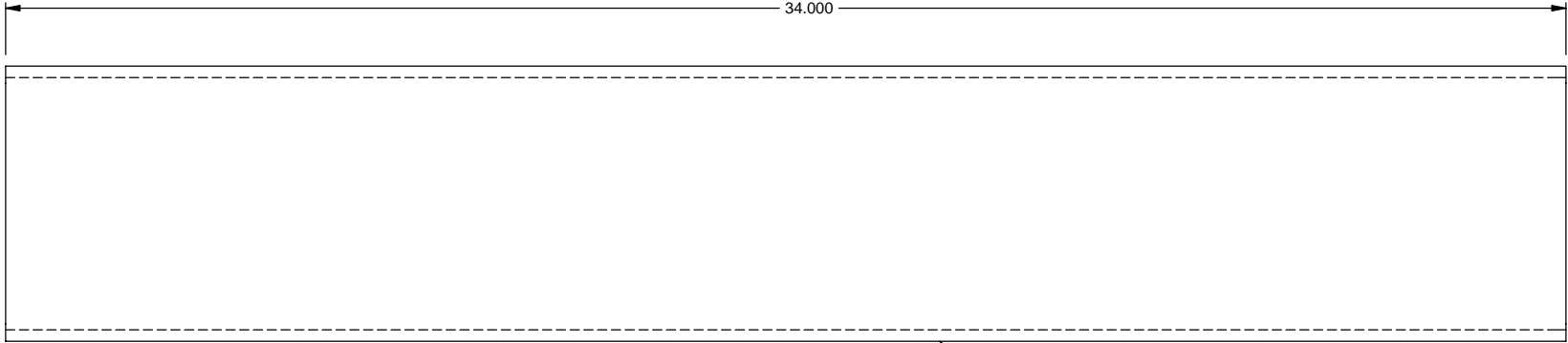


CUSTOMER	
PROJECT	--
WORK ORDER	--
DRAWING INFORMATION	
RELEASED	
CHECKED	
PREPARED	P. STENABAUGH 27 FEB 2005
DRAWING APPROVAL	



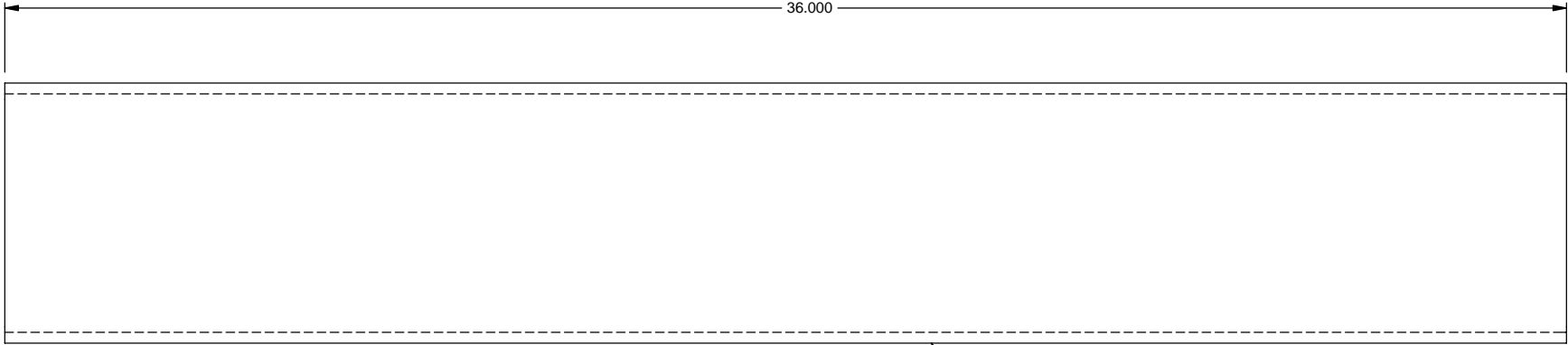
DIMPLING / RIVETTING FRAME GENERAL OVERVIEW					
SCALE NOTED	SIZE D	RIV-001		REV --	SHEET 1 OF 3

Copyright by Custom Design & Fabrication.
This drawing contains information that is proprietary to Custom Design & Fabrication.
It may not be reproduced, copied or duplicated in any manner without the written consent of Custom Design & Fabrication.



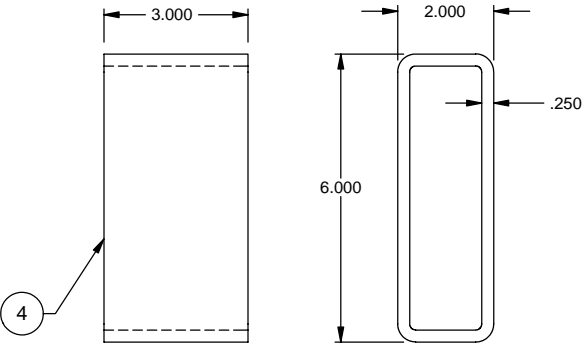
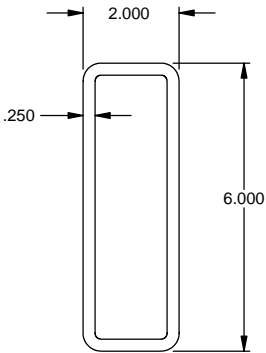
BOTTOM TUBE

3

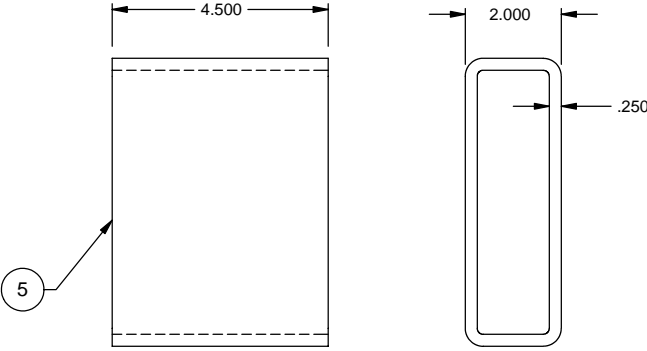
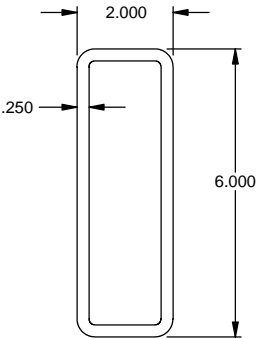


TOP TUBE

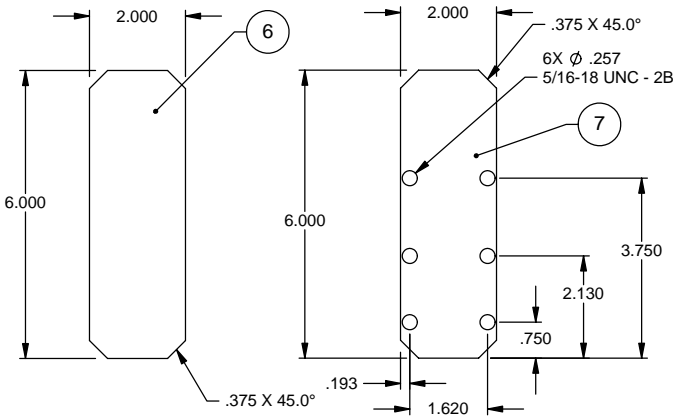
2



3.0" VERTICAL TUBE

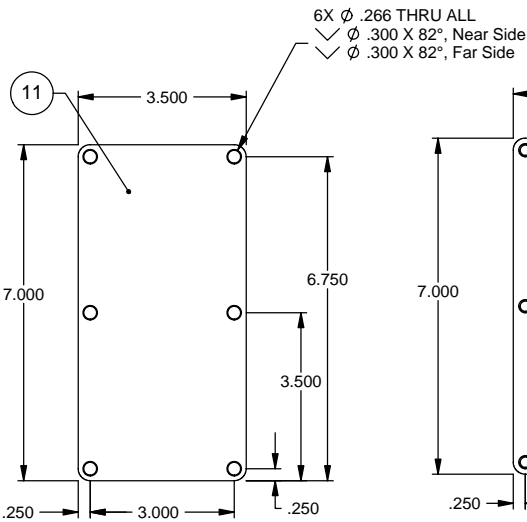


4.5" VERTICAL TUBE

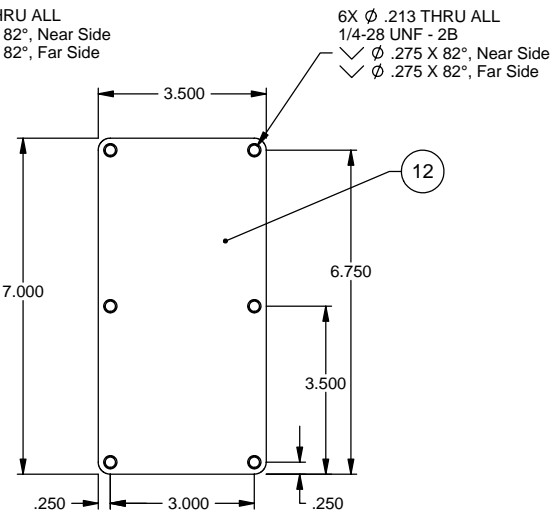


BLANK
END PLATE

TAPPED
END PLATE



DRILLED
PLATE



TAPPED
PLATE

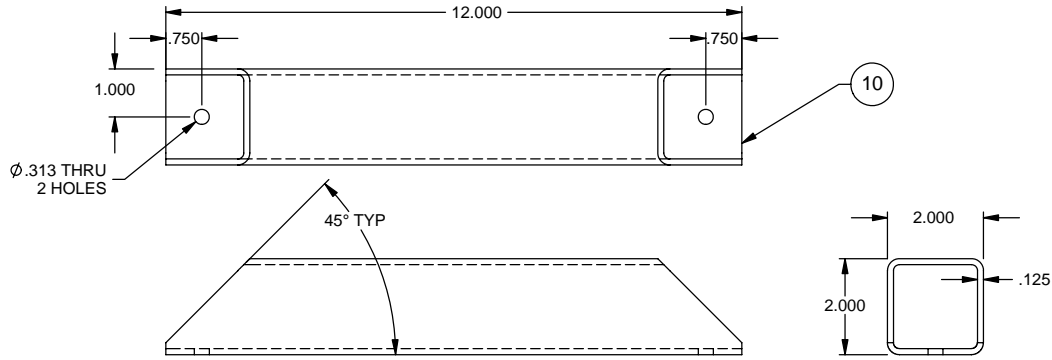


DIMPLING / RIVETTING FRAME
GENERAL OVERVIEW

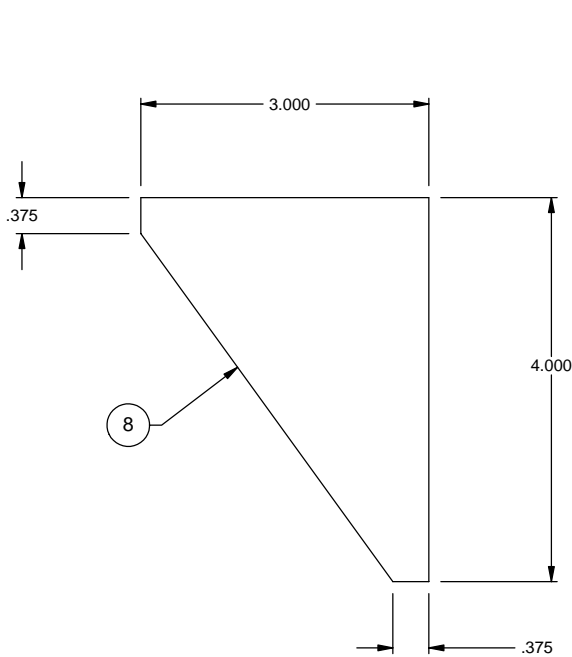
SCALE	SIZE	REV	SHEET
NOTED	D	--	2 OF 3

RIV-001

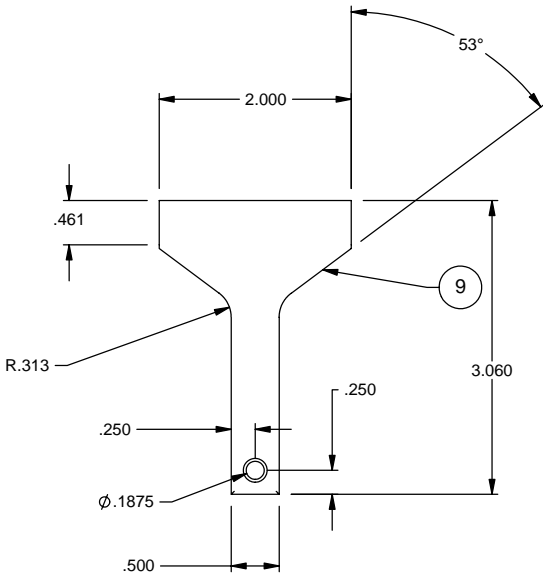
Copyright by Custom Design & Fabrication.
This drawing contains information that is proprietary to Custom Design & Fabrication.
It may not be reproduced, copied or duplicated in any
manner without the written consent of Custom Design & Fabrication.



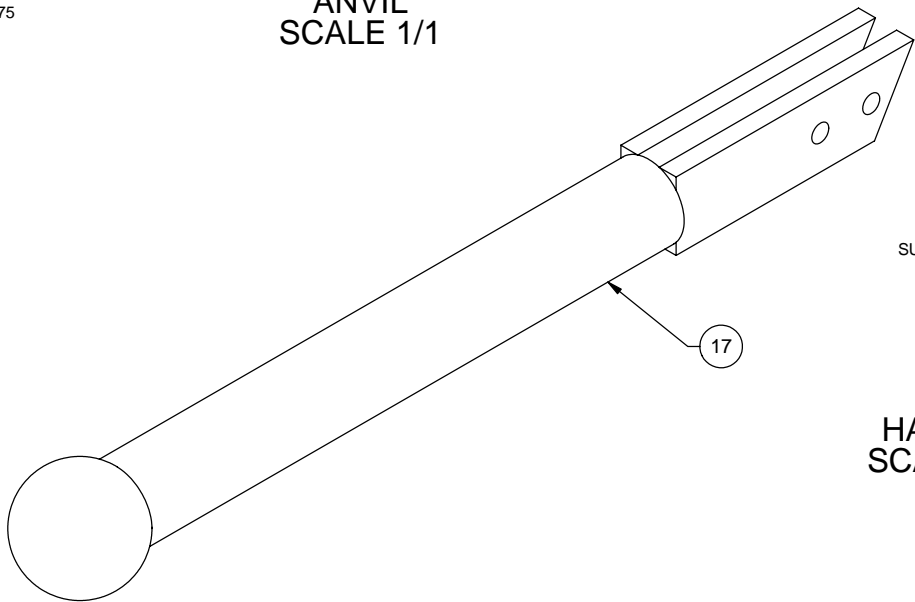
LEG
SCALE 1/2



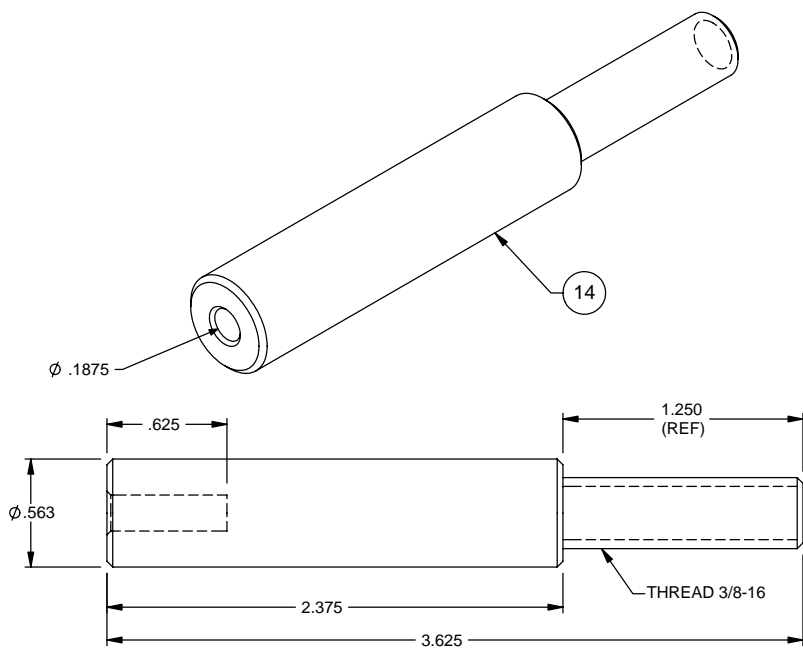
ANVIL GUSSET
SCALE 1/1



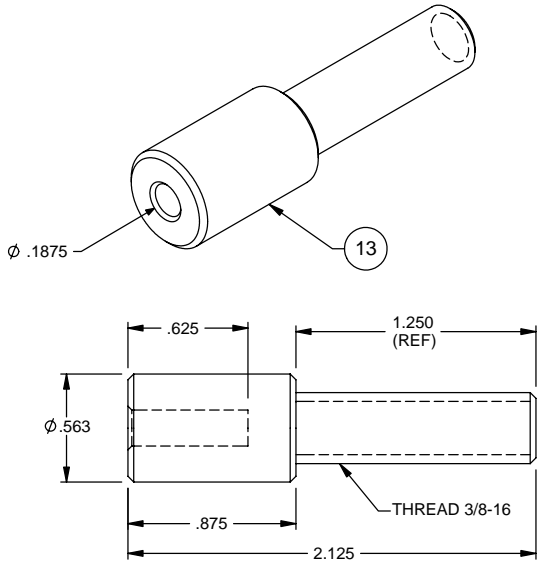
ANVIL
SCALE 1/1



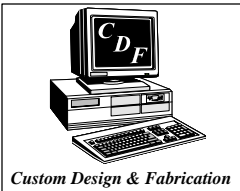
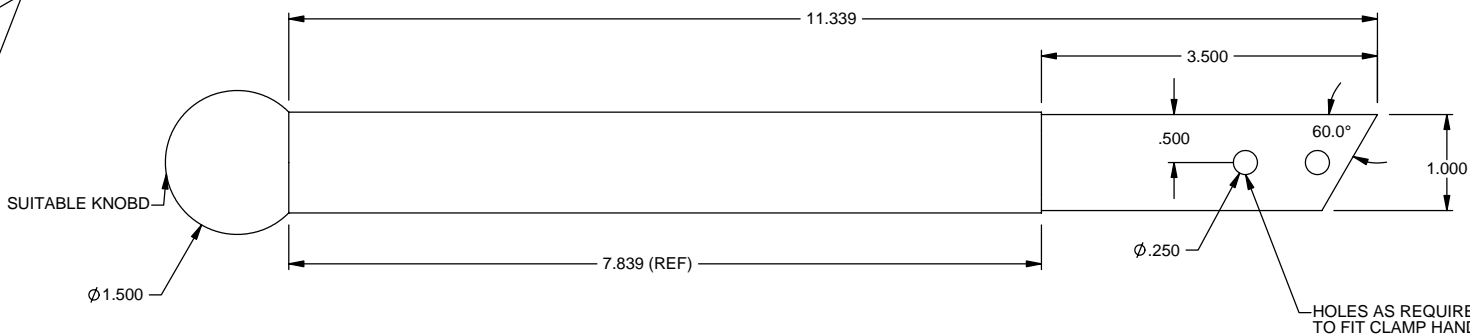
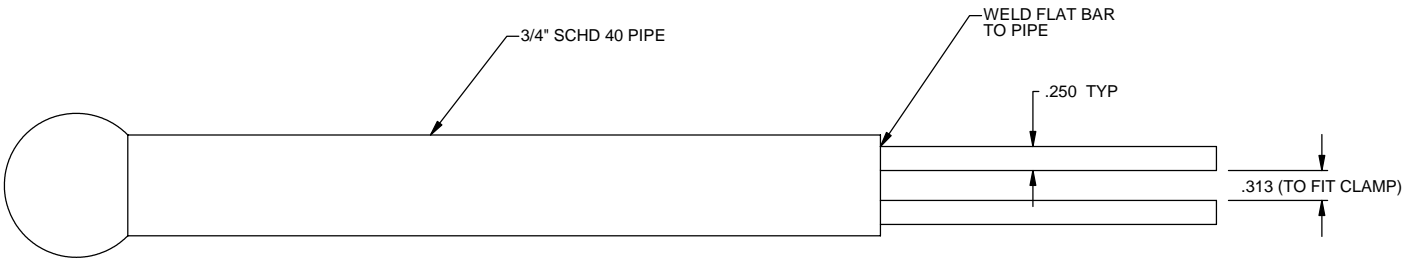
HANDLE
SCALE 1/2



LONG ADAPTER
SCALE 2/1



SHORT ADAPTER
SCALE 2/1



DIMPLING / RIVETTING FRAME
GENERAL OVERVIEW

SCALE	SIZE	REV	SHEET
NOTED	D	--	2 OF 3

RIV-001